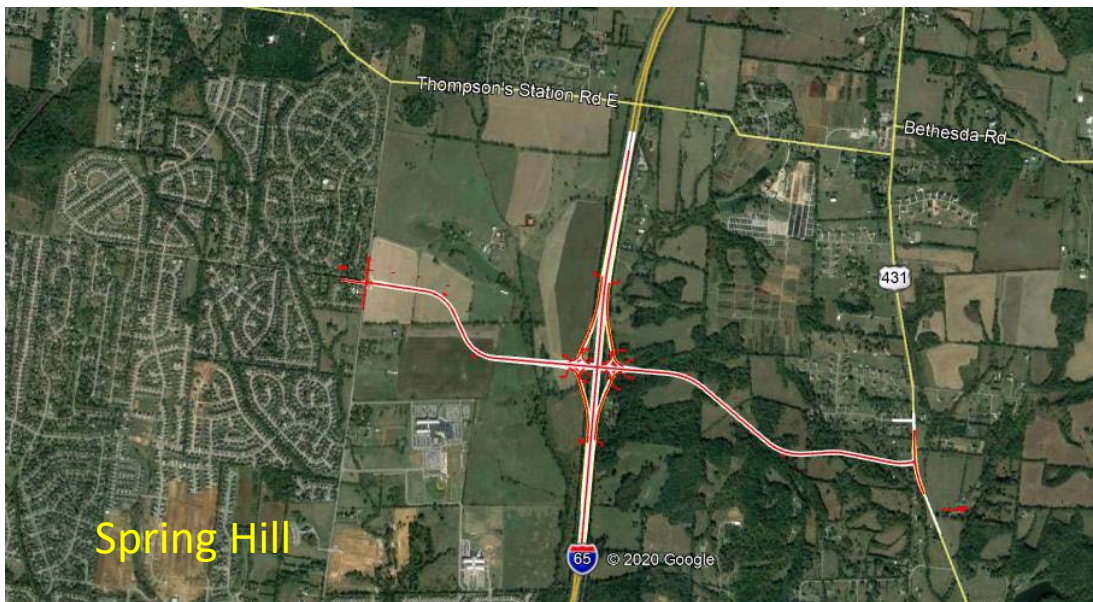


Pavement Evaluation Report

Williamson County

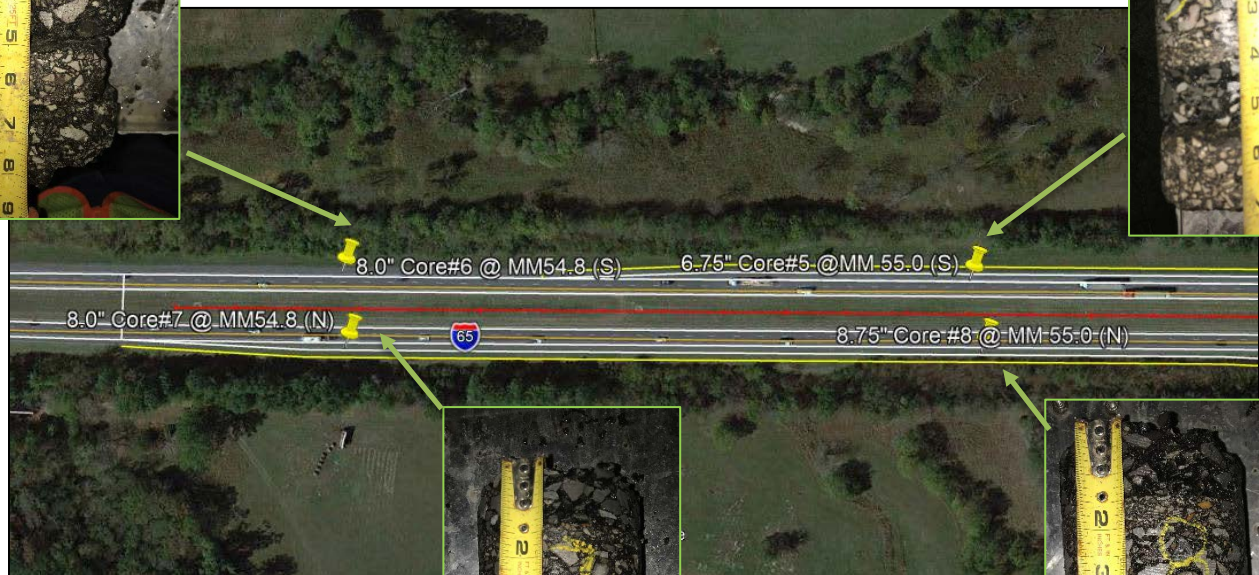
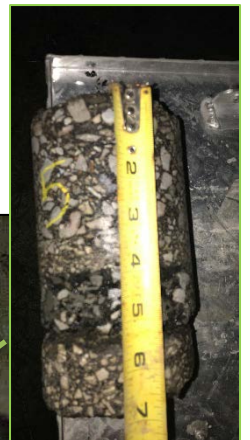
I-65



The purpose of this evaluation is to identify the existing pavement depth on the shoulders of I-65 between MM56.0 and MM 54.8 near Spring Hill in Williamson County. This work was conducted per the request of Mark Woods with HQ Maintenance Division and Justin Eckel, P.E. with Volkert, Inc.

Twelve cores were cut on the project by Materials & Tests Field Operations on September 8, 2020. The cores were cut on the existing northbound/southbound shoulder. Cores have a depth of pavement between 5.25" and 10.5".

| Core # | Depth (inches) | Mile Marker |
|-----------------|----------------|-------------|
| 1 (Southbound) | 8.00 | MM 56.0 |
| 2 (Southbound) | 9.00 | MM 55.8 |
| 3 (Southbound) | 9.00 | MM 55.4 |
| 4 (Southbound) | 10.5 | MM 55.2 |
| 5 (Southbound) | 6.75 | MM 55.0 |
| 6 (Southbound) | 8.00 | MM 54.8 |
| 7 (Northbound) | 8.00 | MM 54.8 |
| 8 (Northbound) | 8.75 | MM 55.0 |
| 9 (Northbound) | 9.25 | MM 55.2 |
| 10 (Northbound) | 5.25 | MM 55.4 |
| 11 (Northbound) | 10.25 | MM55.8 |
| 12(Northbound) | 10.25 | MM 56.0 |





If you have any questions, please contact ulises.martinez@tn.gov or matthew.chandler@tn.gov

Ulises Martinez
Pavement Evaluation Supervisor

Matthew Chandler, PE
State Bituminous Engineer